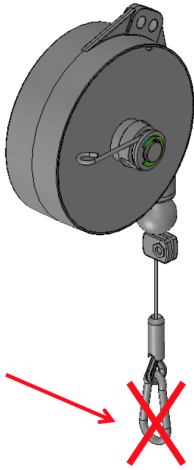


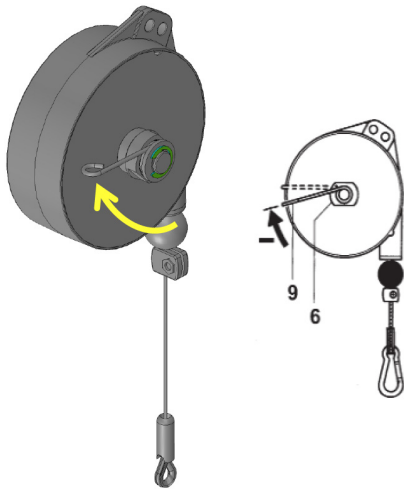


TTA Torque Arm Balancer Assembly Work Instructions

1. Remove the hook.

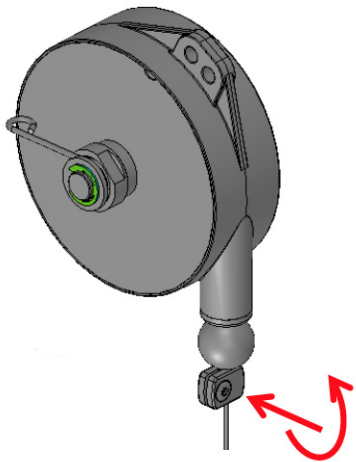


2. Loosen the balancer spring to minimum force, acting on the lever.



3. Loosen the cable holder.

PAY ATTENTION TO WIRE REBOUND!



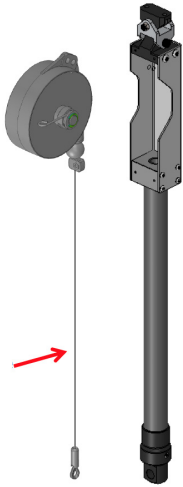
ASG, Division of Jergens, Inc.

15700 S. Waterloo Road | Cleveland, OH 44110-3898
Phone: (888) 486-6163 | Fax: (216) 481-4519
Email: asginfo@asg-jergens.com | Web: www.asg-jergens.com

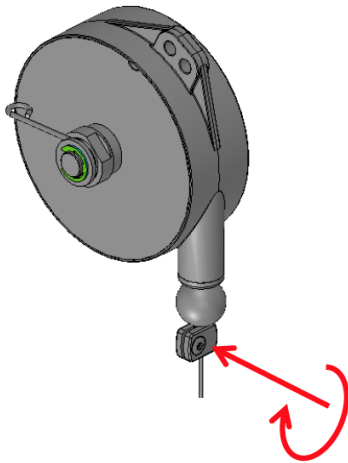


TTA Torque Arm Balancer Assembly Work Instructions

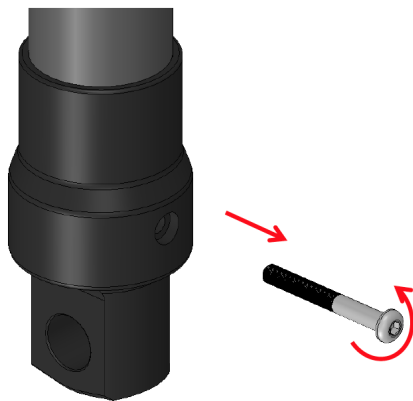
4. Extend the balancer wire as long as the arm length.



5. Fix the cable to allow safe handling



6. Remove the screw from the arm holder interface.



ASG, Division of Jergens, Inc.

15700 S. Waterloo Road | Cleveland, OH 44110-3898

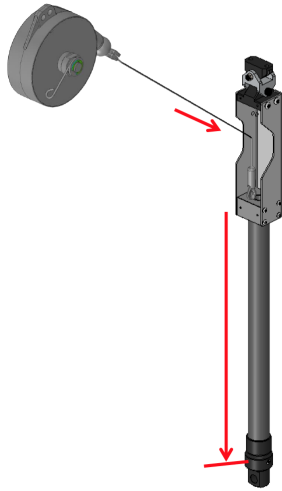
Phone: (888) 486-6163 | Fax: (216) 481-4519

Email: asginfo@asg-jergens.com | Web: www.asg-jergens.com

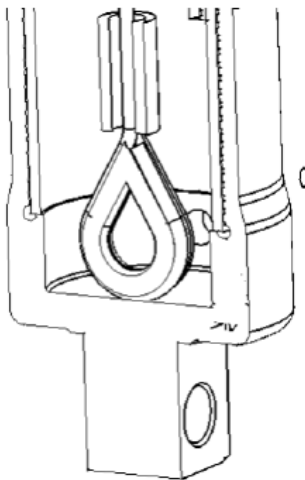


TTA Torque Arm Balancer Assembly Work Instructions

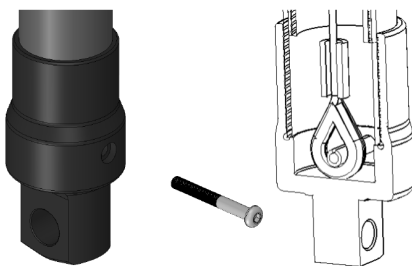
7. Insert the wire inside tubes until the eye reaches the end of tubes, in the holder interface area.



8. This is how the wire eye should be inside the arm.



9. Re-insert the holder interface screw and fix it. The screw should pass through the wire eye.



ASG, Division of Jergens, Inc.

15700 S. Waterloo Road | Cleveland, OH 44110-3898

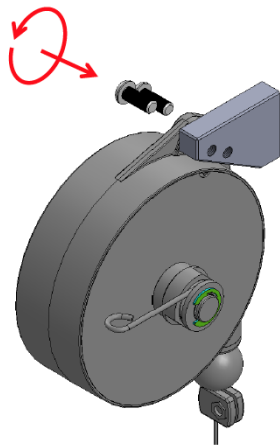
Phone: (888) 486-6163 | Fax: (216) 481-4519

Email: asginfo@asg-jergens.com | Web: www.asg-jergens.com

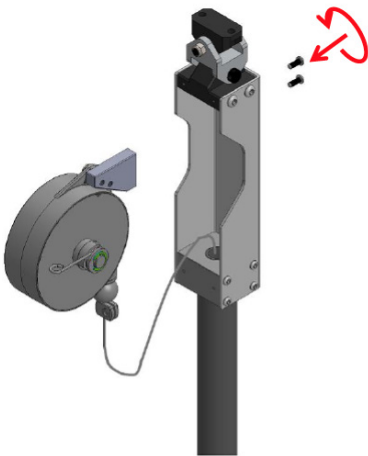


TTA Torque Arm Balancer Assembly Work Instructions

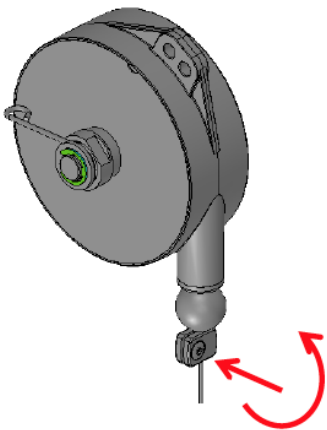
10. Mount the balancer bracket.



11. Mount the balancer and bracket into the arm bracket.



12. Loosen the cable holder



ASG, Division of Jergens, Inc.

15700 S. Waterloo Road | Cleveland, OH 44110-3898

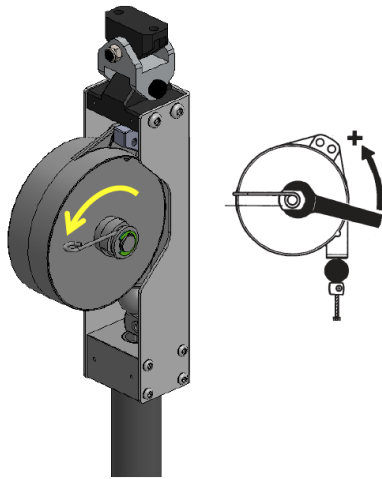
Phone: (888) 486-6163 | Fax: (216) 481-4519

Email: asginfo@asg-jergens.com | Web: www.asg-jergens.com

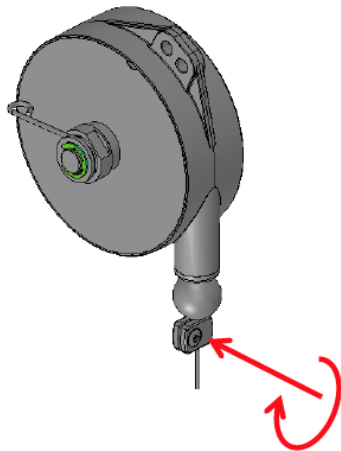


TTA Torque Arm Balancer Assembly Work Instructions

13. Adjust the balancer wire tension to eliminate any slack inside the arm.



14. Fix the cable holder.



Arm is now ready to be configured for tool installation.

These work instructions can be used with the following part numbers: 80001, 80002, 80003, 80004, 80005, 80006, 80007, 80008, 80009, 80010, 80011, 80012, 80013, 80014, 80015, 80016, 80017, 80018

ASG, Division of Jergens, Inc.

15700 S. Waterloo Road | Cleveland, OH 44110-3898

Phone: (888) 486-6163 | Fax: (216) 481-4519

Email: asginfo@asg-jergens.com | Web: www.asg-jergens.com