

## Self Backey Controller SBC-1

### Instruction Manual

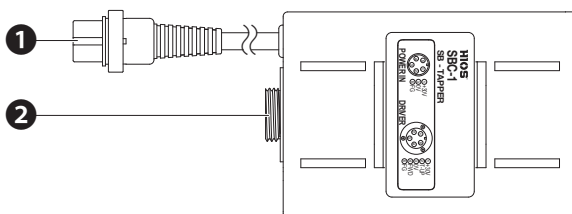
(April, 2018)

HIOS Inc. 1-16-5 Akiyama, Matsudo City, Chiba Pref., Japan TEL: +81-47-392-2001

ET-A069 18A

This is the controller of Electric tapper SB-400C/SB-650C. It automatically detects excessive load on the tap and the pilot hole, as well as tapper stops itself and returns when the specified depth is achieved.

### Parts Name



#### ❶ Power Supply Connecting Cord

Connect to power supply.

#### ❷ Screwdriver connector

Connect driver cord with tapper.

### Specifications

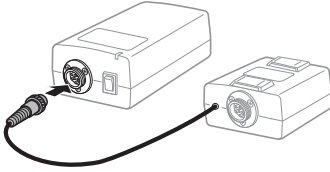
|                         |  |
|-------------------------|--|
| Dimensions (WxDxH)      | 70×100×42mm                              |
| Weight                  | 153.5g                                   |
| Compatible Tapper       | SB-400C/SB-650C                          |
| Compatible Power Supply | T-45BL/T-70BL                            |
| Accessories             | Bracket×2, Double sided tape×2, Manual×1 |

## Connection and Installation

---

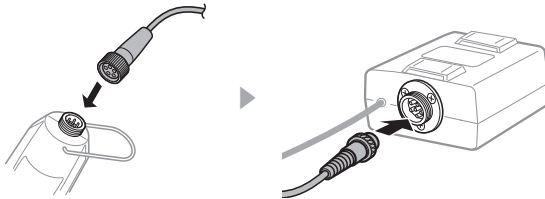
### 1 Connect SBC-1 with Power Supply.

- Use joint ring to lock power supply.

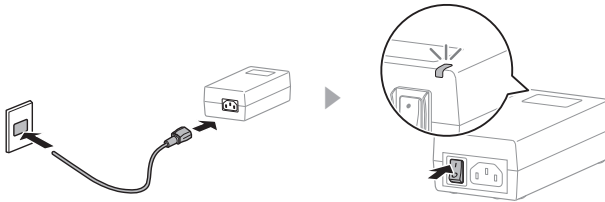


### 2 Connect Driver Cord with SB Tapper and SBC-1.

- Use joint ring to lock driver cord.



### 3 Connect power cable with electric outlet, then turn on.

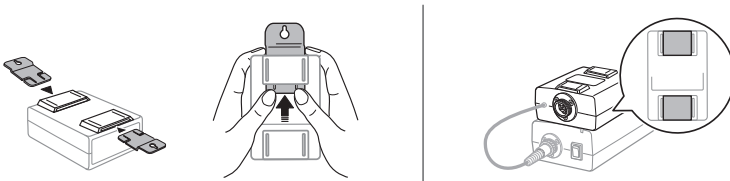


## Power Supply Output

Normally, set HI (30V). If you would like a slow RPM, please switch to LOW (20V).

## Installation

Either use brackets or double-sided tape.



## Overload

---

When overload, it beeps and reverses. Do not release lever until tap is back in the first position.