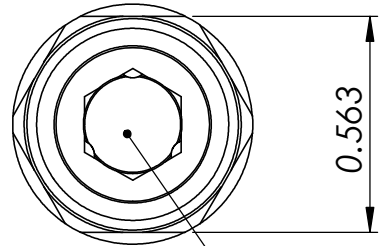
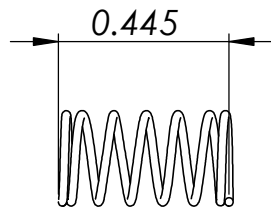
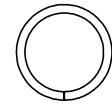
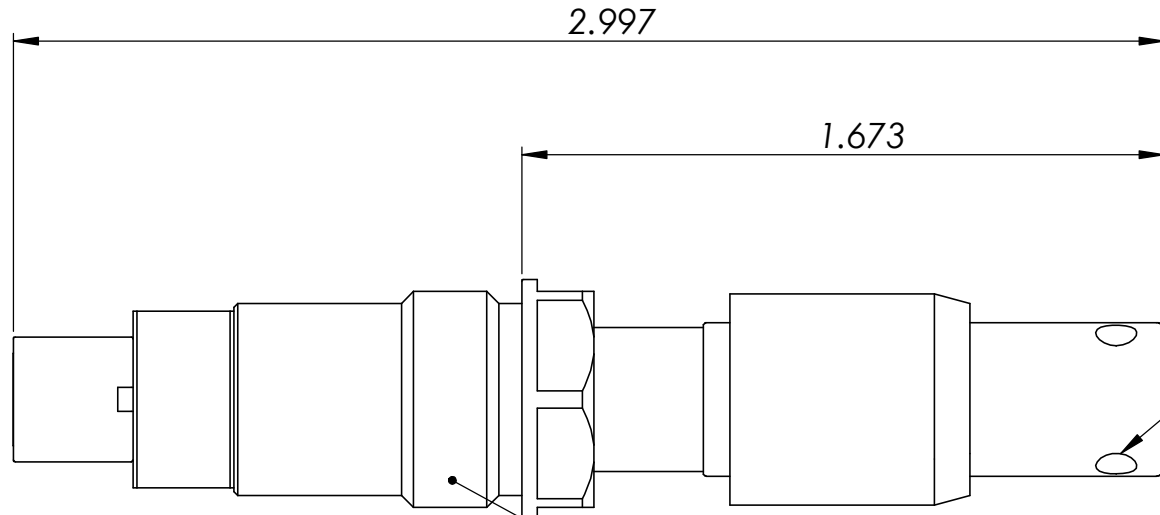


REV.	ECN/PCN/DESCRIPTION	BY	DATE

PUSH TO START SPRING



FOR USE WITH 1/4" POWER BITS



#6-32 X 3 PLACES

LEFT HAND THREAD



**PROPRIETARY AND CONFIDENTIAL**  
 THE INFORMATION CONTAINED IN THIS DRAWING IS THE SOLE PROPERTY OF ASG A DIVISION OF JERGENS INC. ANY REPRODUCTION IN PART OR AS A WHOLE WITHOUT THE WRITTEN PERMISSION OF ASG A DIVISION OF JERGENS INC. IS PROHIBITED.

UNLESS OTHERWISE SPECIFIED:		NAME	DATE	TITLE: <b>ASG-AC2500-SPEX</b>	
DIMENSIONS ARE IN INCHES		DRAWN			
TWO PLACE DECIMAL ±0.01		CHECKED			
THREE PLACE DECIMAL ±0.005		ENG APPR.			
FRACTIONAL ±1/64		MFG APPR.			
ANGULAR: ± 1/2 DEG		Q.A.			
FINISHES 125 MAX		COMMENTS:		SIZE <b>B</b>	DWG. NO. <b>ASG-AC2500-SPEX</b>
REMOVE ALL BURRS AND BREAK SHARP EDGES 0.005/0.010	MATERIAL			REV <b>A</b>	
FINISH	DO NOT SCALE DRAWING			WEIGHT: N/A	SHEET 1 OF 1
APPLICATION					

NEXT ASSY USED ON