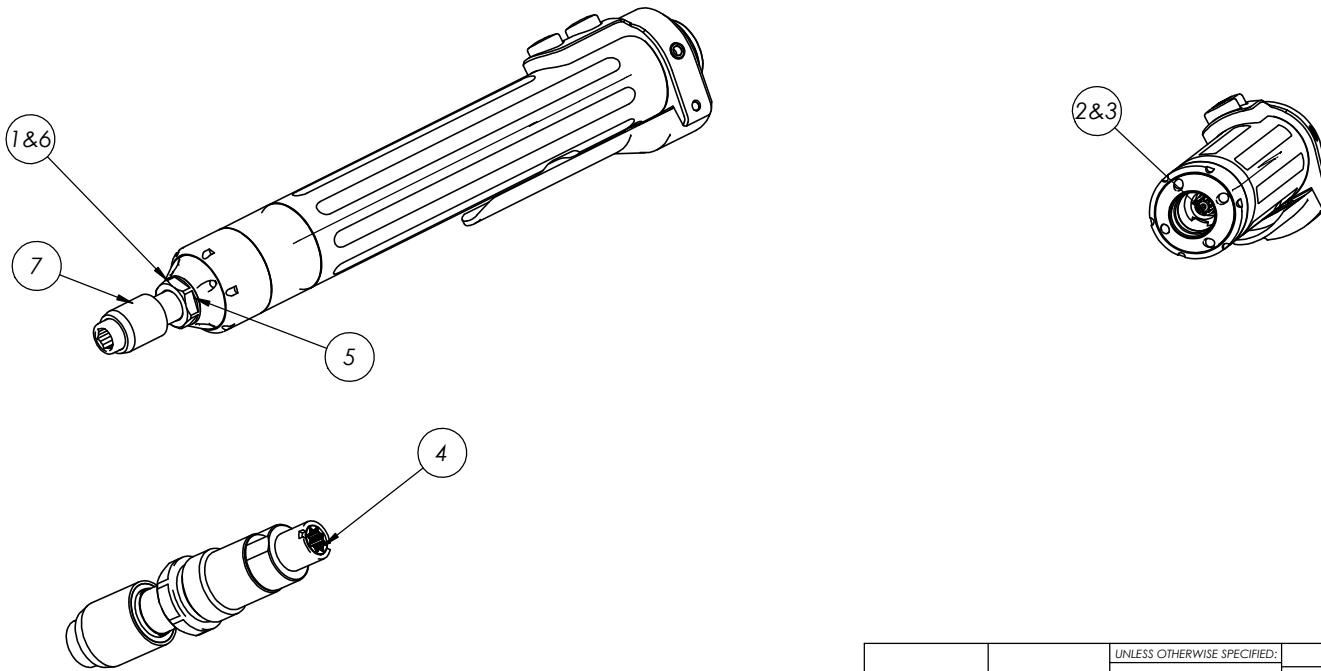


8 7 6 5 4 3 2 1


REV.	ECN/PCN/DESCRIPTION	BY	DATE

**TO CHANGE TOOL SPINDLE (ASG-AC2500-SP OR SPEX):**

1. USE A 9/16" WRENCH TO LOOSEN SPINDLE NUT WHILE FIRMLY HOLDING TOOL - NOTE THIS IS A LH THREAD SO TO LOOSEN TURN NUT CLOCKWISE.
2. REMOVE PUSH TO START SPRING FROM INTERIOR OF THE TOOL BY EITHER SHAKING IT OUT OR USING NEEDLE-NOSE PLIERS.
3. REPLACE PUSH TO START SPRING WITH NEW SPINDLE.
4. PLACE DAB OF NLGI TYPE 0 GREASE ON THE FEMALE SPLINE ON THE REPLACEMENT SPINDLE (LUBRIPLATE 105 RECOMMENDED).
5. INSERT REPLACEMENT SPINDLE INTO TOOL AND ALIGN SPLINES, HANDSTART 9/16" BRASS NUT.
6. TIGHTEN BRASS NUT WITH WRENCH.
7. VERIFY SMOOTH PUSH TO START OPERATION.



**PROPRIETARY AND CONFIDENTIAL**  
 THE INFORMATION CONTAINED IN THIS DRAWING IS THE SOLE PROPERTY OF ASG A DIVISION OF JERGENS INC. ANY REPRODUCTION IN PART OR AS A WHOLE WITHOUT THE WRITTEN PERMISSION OF ASG A DIVISION OF JERGENS INC. IS PROHIBITED.

UNLESS OTHERWISE SPECIFIED:		NAME	DATE	TITLE:
DIMENSIONS ARE IN INCHES				<b>ASG-AC2500-SP REPLACEMENT</b>
TWO PLACE DECIMAL ±0.01		DRAWN		
THREE PLACE DECIMAL ±0.005		CHECKED		
FRACTIONAL ±1/64		ENG APPR.		
ANGULAR: ± 1/2 DEG		MFG APPR.		
FINISHES 125 MAX		Q.A.		COMMENTS:
REMOVE ALL BURRS AND BREAK SHARP EDGES 0.005/0.010				
NEXT ASSY	USED ON			
APPLICATION		DO NOT SCALE DRAWING		
SIZE	DWG. NO.	REV		
<b>B</b>	<b>ASG-AC2500-SP INST</b>	<b>A</b>		
WEIGHT:		SHEET 1 OF 1		

8 7 6 5 4 3 2 1