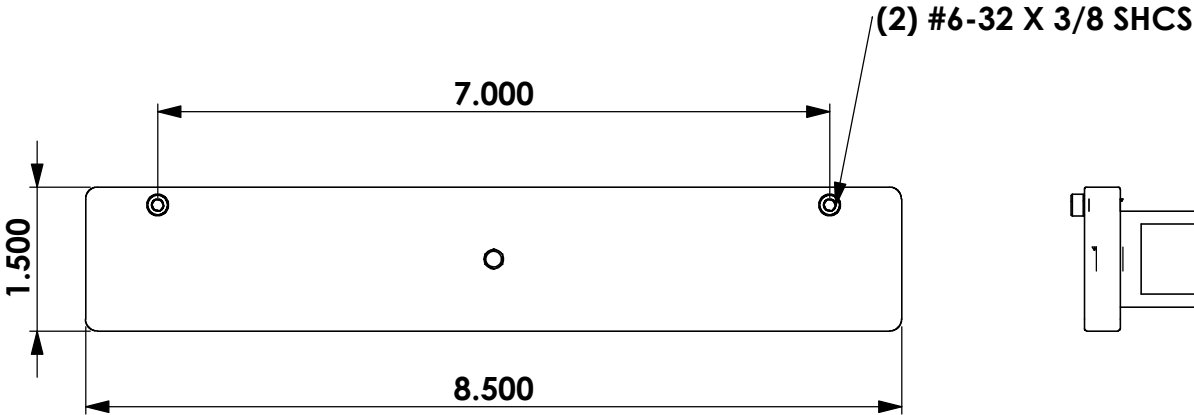
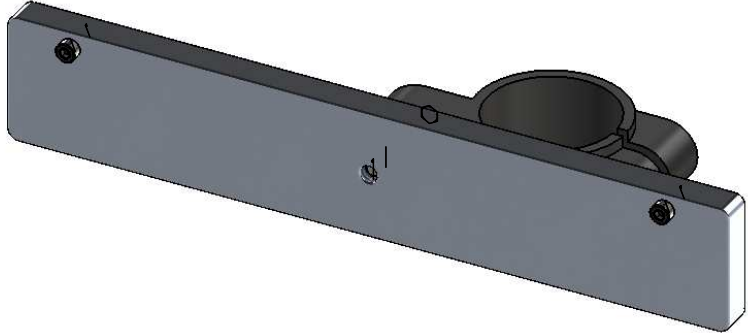
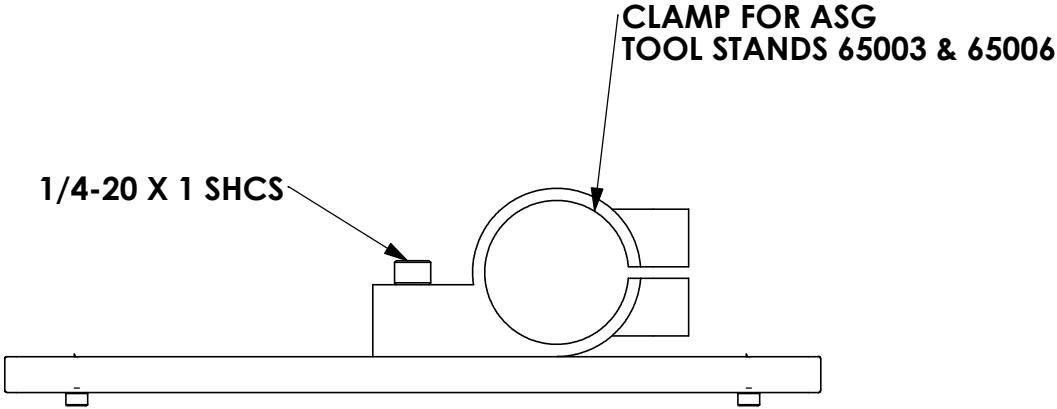
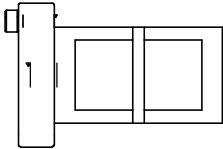


REV.	ECN/PCN/DESCRIPTION	BY	DATE
A	INITIAL RELEASE	CJC	3/30/11




**WHEN ORDERING ASG-AC2500-CM
CUSTOMER TO RECIEVE (2) ASSEMBLIES**



INTENDED FOR USE WITH ASG-CT2500 CONTROLLER

PROPRIETARY AND CONFIDENTIAL
THE INFORMATION CONTAINED IN THIS DRAWING IS THE SOLE PROPERTY OF ASG A DIVISION OF JERGENS INC. ANY REPRODUCTION IN PART OR AS A WHOLE WITHOUT THE WRITTEN PERMISSION OF ASG A DIVISION OF JERGENS INC. IS PROHIBITED.

		DIMENSIONS ARE IN INCHES TOLERANCES UNLESS OTHERWISE SPECIFIED:		NAME	DATE	TITLE	XPAQ CONTROLLER MOUNTING BRACKET ASSEMBLY		
		TWO PLACE DECIMAL ± 0.01 THREE PLACE DECIMAL ± 0.005 FRACTIONAL ± 1/64 ANGULAR ± 1/2 DEG FINISHES 125 MAX REMOVE ALL BURRS AND BREAK SHARP EDGES 0.005/0.010 INSIDE CORNERS 0.035 R MAX		DRAWN					
				CHECKED					
				ENG APPR.					
				MFG APPR.					
				Q.A.					
				COMMENTS:			SIZE	DWG. NO.	REV.
NEXT ASSY	USED ON	MATERIAL					A	ASG-AC2500-CM	A
		FINISH					WEIGHT:		SHEET 1 OF 1
APPLICATION		DO NOT SCALE DRAWING							