

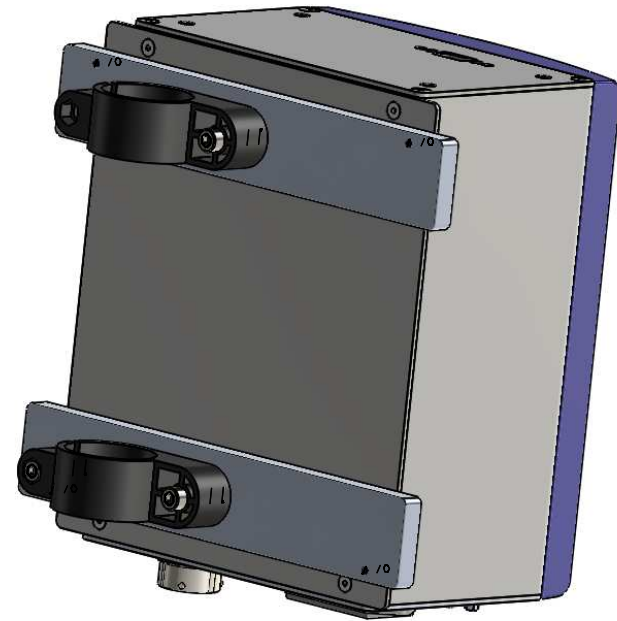
8 7 6 5 4 3 2 1

REV.	ECN/PCN/DESCRIPTION	BY	DATE

VERTICALLY MOUNTED:



HORIZONTALLY MOUNTED:




NOTES:

ASG-AC2500-CM INCLUDES (1) PAIR OF BRACKETS FOR MOUNTING THE ASG-CT2500 CONTROLLER.

POLE CLAMPS INCLUDED WITH ASG-AC2500-CM MADE TO FIT 1.5" O.D. PIPE INCLUDED WITH ASG TOOL SUPPORT STANDS (65003 AND 65006).

ASG-AC2500-CM BRACKETS CAN BE MOUNTED EITHER VERTICALLY OR HORIZONTALLY TO SUIT THE APPLICATION.

PROPRIETARY AND CONFIDENTIAL
 THE INFORMATION CONTAINED IN THIS DRAWING IS THE SOLE PROPERTY OF ASG A DIVISION OF JERGENS INC. ANY REPRODUCTION IN PART OR AS A WHOLE WITHOUT THE WRITTEN PERMISSION OF ASG A DIVISION OF JERGENS INC. IS PROHIBITED.

		UNLESS OTHERWISE SPECIFIED:		NAME	DATE	TITLE:
		DIMENSIONS ARE IN INCHES				ASG-CT2500 with ASG-AC2500-CM
		TWO PLACE DECIMAL ±0.01		DRAWN		
		THREE PLACE DECIMAL ±0.005		CHECKED		
		FRACTIONAL ±1/64		ENG APPR.		
		ANGULAR: ± 1/2 DEG		MFG APPR.		
		FINISHES 125 MAX		Q.A.		
		REMOVE ALL BURRS AND BREAK SHARP EDGES 0.005/0.010		COMMENTS:		
		MATERIAL				SIZE
		FINISH				B
NEXT ASSY	USED ON					DWG. NO.
						REV
APPLICATION		DO NOT SCALE DRAWING				SCALE: 1:5
						WEIGHT:
						SHEET 1 OF 1

8 7 6 5 4 3 2 1